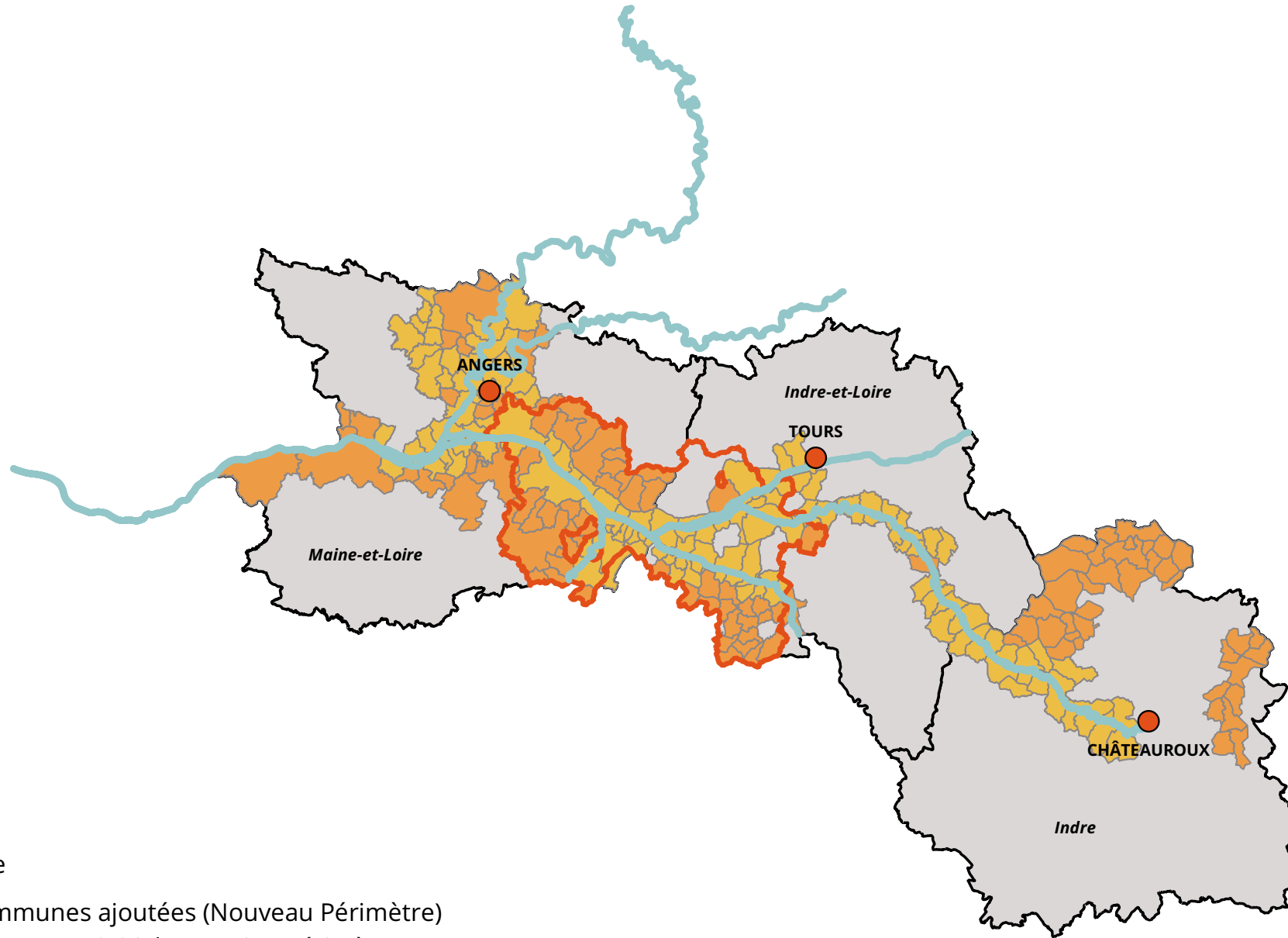







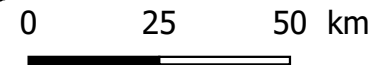


# NOUVEAU PERIMETRE "DU PEUPLIER POUR L'AVENIR"



## Légende

-  Communes ajoutées (Nouveau Périmètre)
-  Communes initiales (Ancien Périmètre)
-  PNR Loire Anjou Touraine
-  Départements
-  Hydrographie Principale



Réalisation : Léa BOUBET © CNPF  
Date : Octobre 2020  
Sources : IGN, Carmen